



AXAGON

USER MANUAL

USB TO **SERIAL** ADVANCED **ADAPTER**

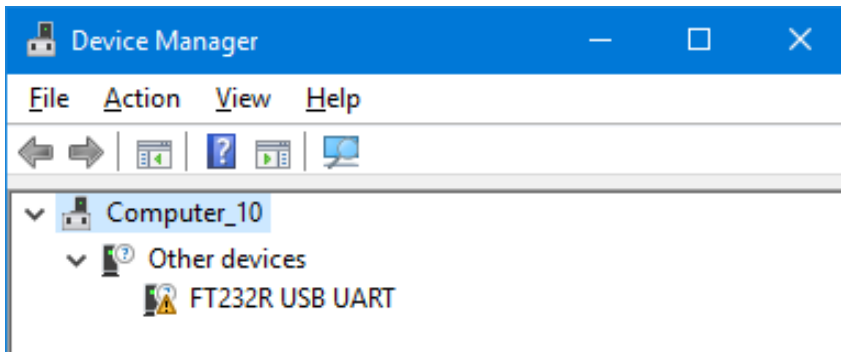
ADS-1PQ



INSTALLATION PROCEDURE

1. Connect the adapter to the PC's USB port, it will be detected automatically.

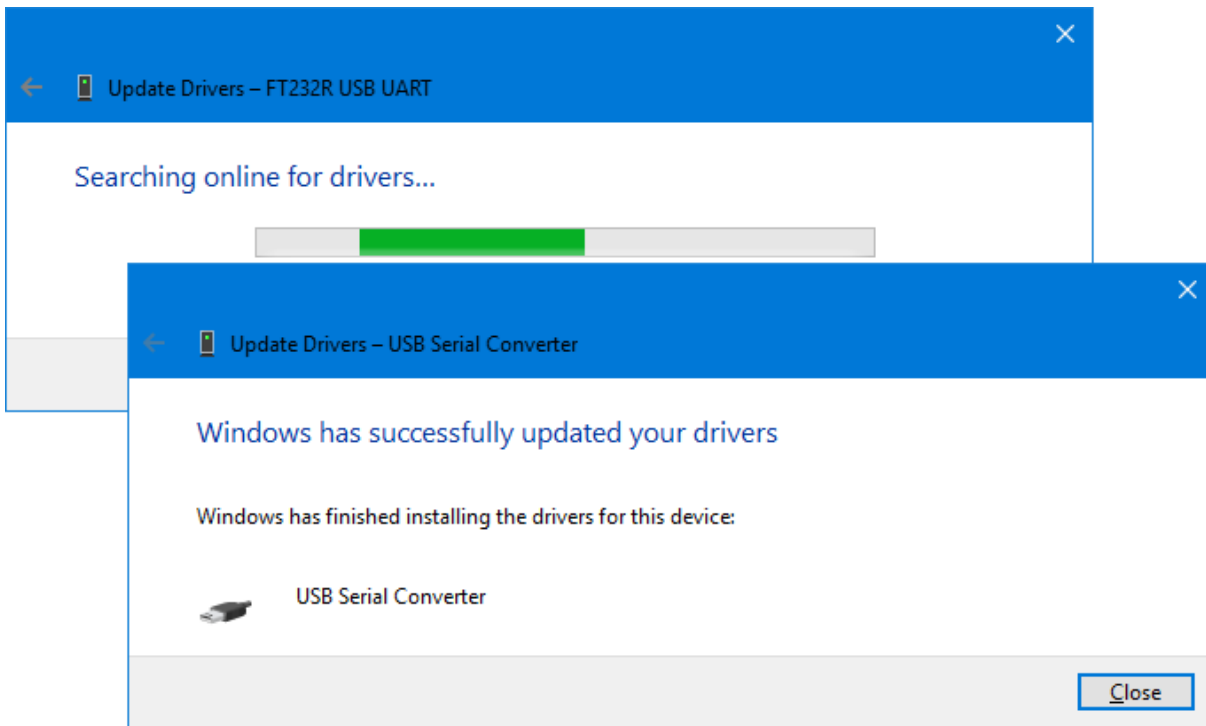
FIGURE 1. Detecting the ADS-1PQ adapter in Windows 10.



2. The required driver will be automatically downloaded from Windows Update.

3. You can also update it manually in "Device Manager" and automatically search for it (**Fig. 2**).

FIGURE 2. Searching for and updating driver software in Windows 10.



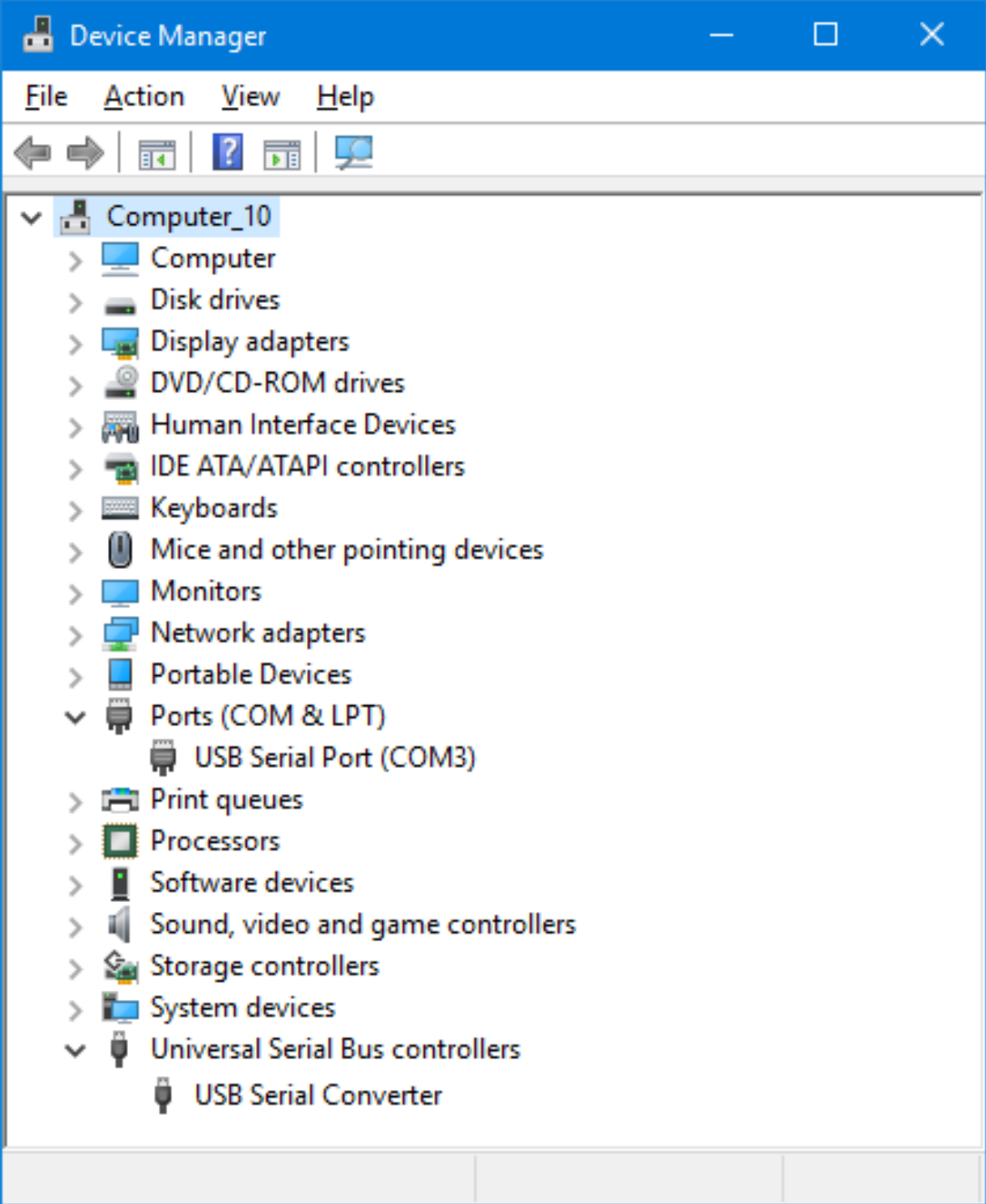
4. You can also install the driver software manually.

5. Download the latest driver from www.axagon.eu. When the download is complete, expand the downloaded file and run CDM21216_Setup.exe from the folder: Windows.

6. In "Device Manager", please check the correct installation (**Fig. 3**).



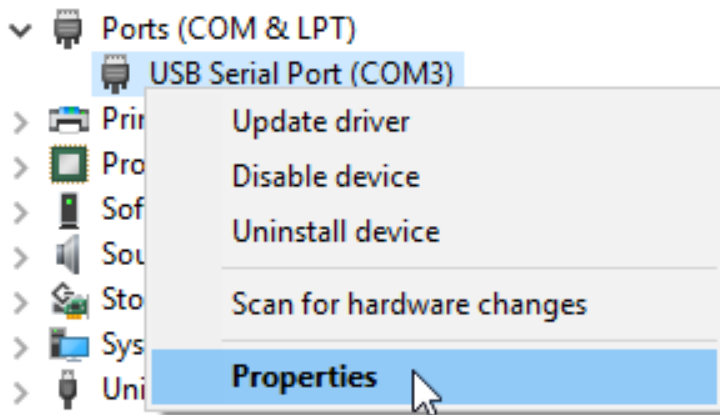
FIGURE 3. Verifying successful installation in "Device Manager" (Windows 10).



SETTING THE SERIAL PORT

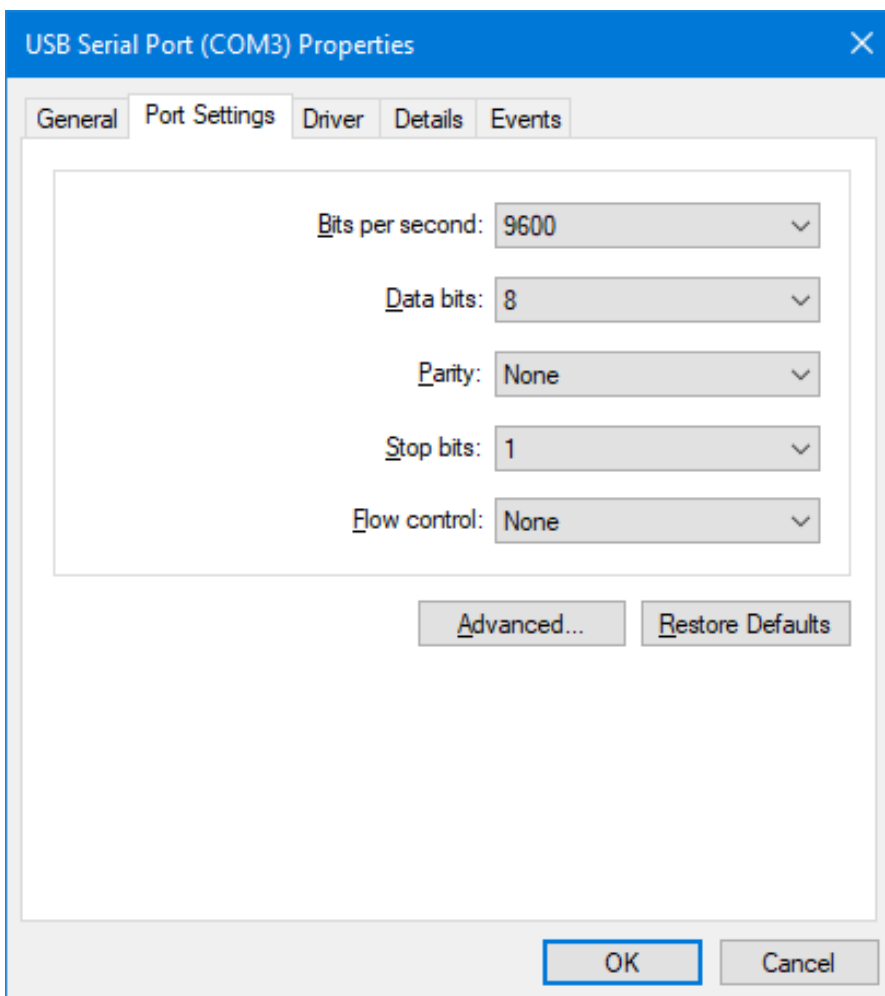
1. In “Device Manager”, right-click USB Serial Port and select “Properties” (Fig. 4) from the menu.

FIGURE 4. Setting the serial port properties in Windows 10.



2. In the “Serial Port Properties” window, select the “Port Settings” tab to set its speed, word length, parity, stop-bits, and flow control (Fig. 5, Fig. 9).

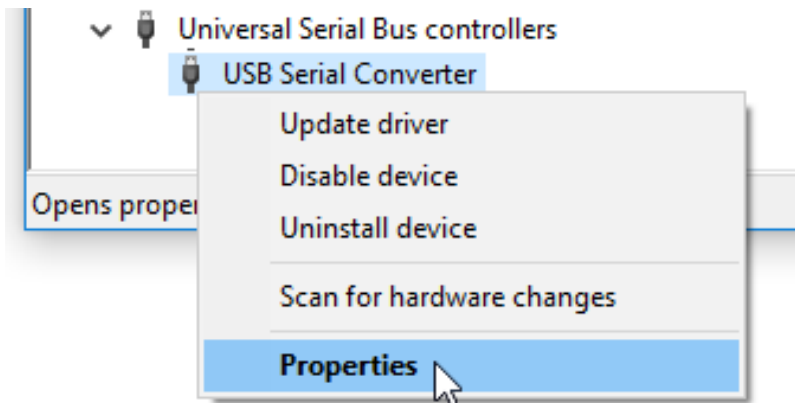
FIGURE 5. Setting the serial port properties in Windows 10.



3. In “Device Manager”, right-click “USB Serial Converter” and select “Properties” (Fig. 6) from the menu.

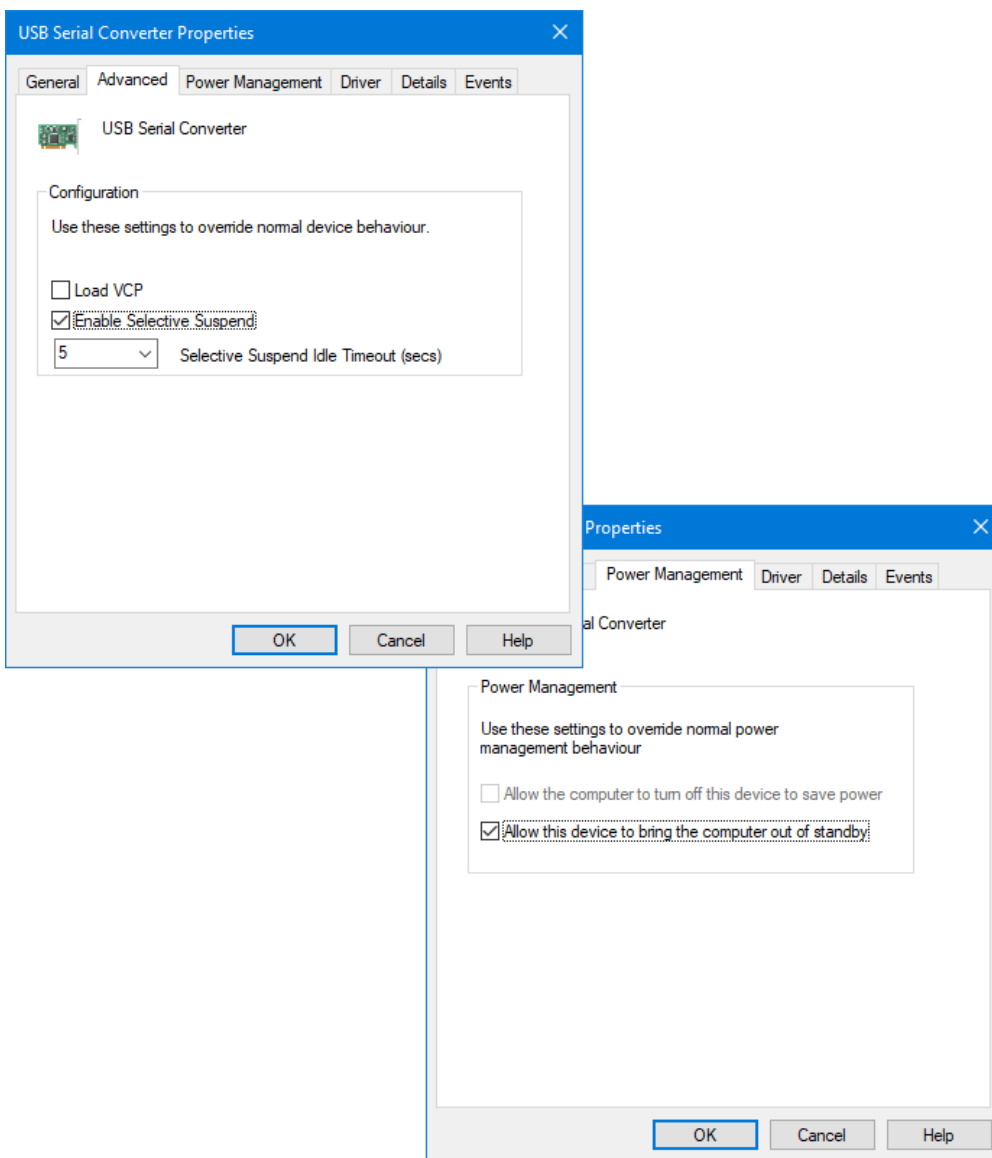


FIGURE 6. Setting the serial port properties in Windows 10.



4. The Advanced tab lets you set the idle timeout value (1-3,600 seconds) and remote "Wake Up" in the "Power Management" tab (**Fig. 7**).

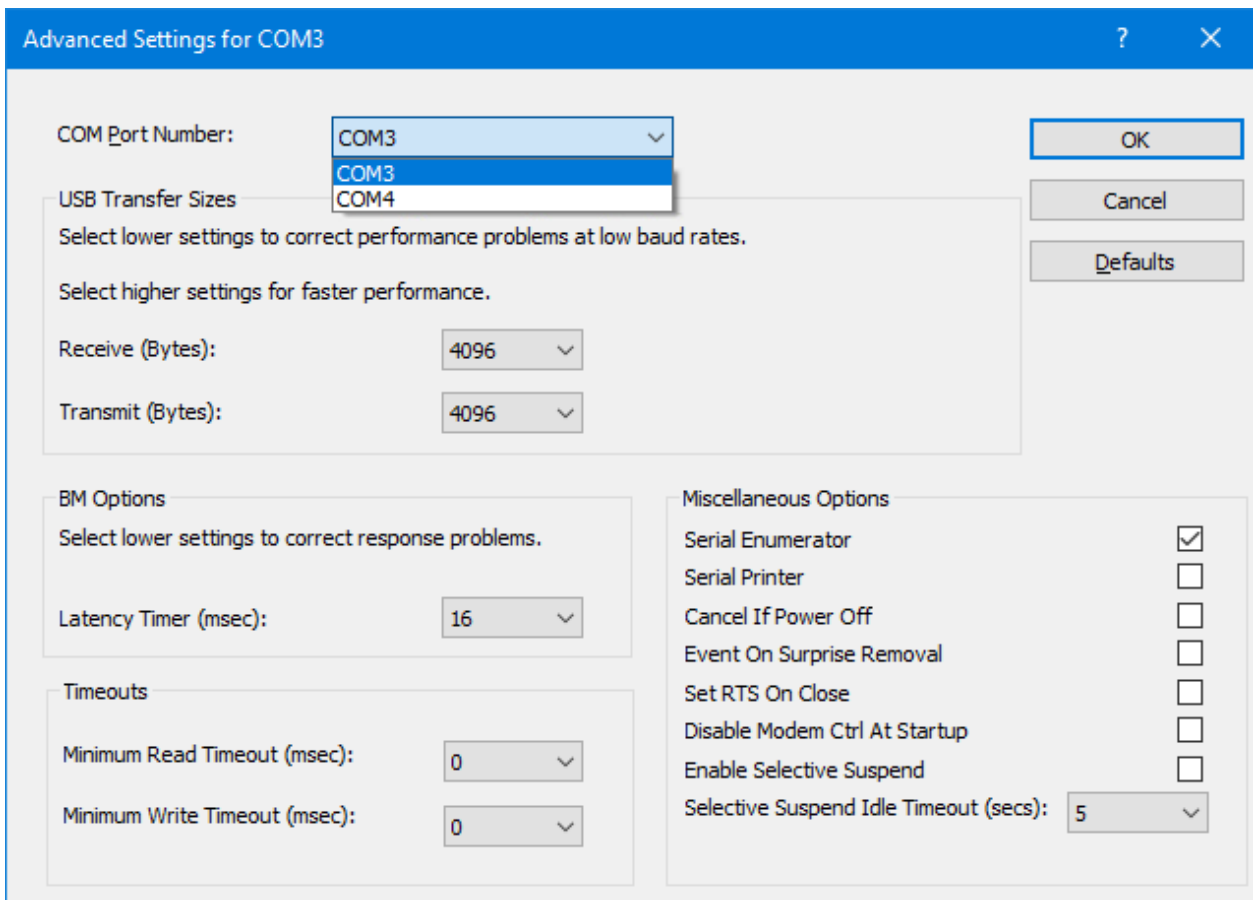
FIGURE 7. Setting the serial port properties in Windows 10.



5. You can change the COM port number by clicking the "Advanced button" (**Fig. 8**).



FIGURE 8. Advanced settings for the serial port properties in Windows 10.

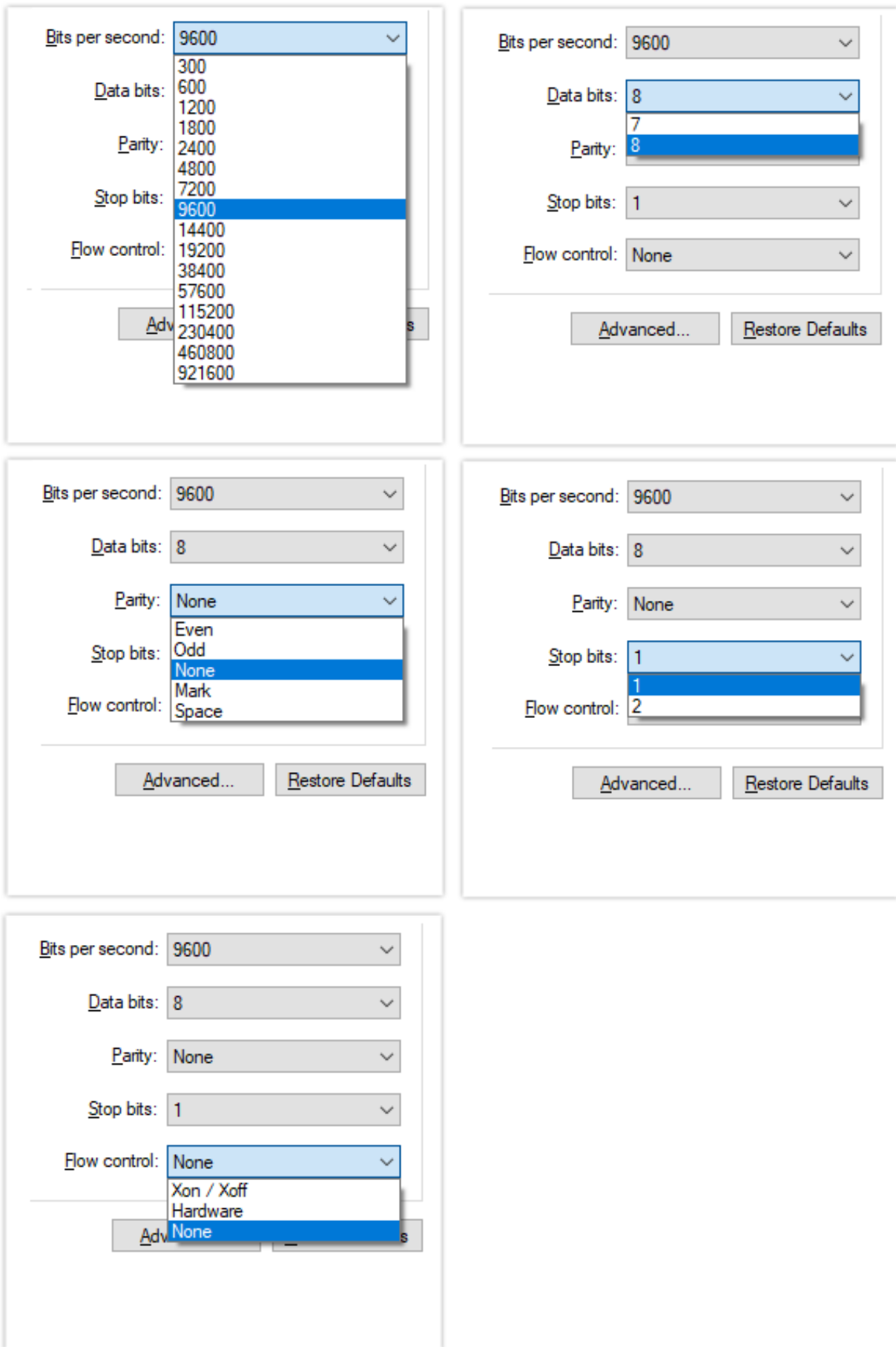


6. In the advanced serial port settings, you can also:
set the use of the FIFO buffer: receiving (64b – 4096b) and sending (64b – 4096b),
set the latency to 1 - 255 ms,
set the interruption to 0 - 10,000 ms (reading) / 0 - 10,000 ms (writing).

Enable other features: Serial Enumerator, Serial Printer, Cancel If Power Off, Event On Surprise Removal, Set RTS On Close, Disable Modem Ctrl At Startup, Enable Selective Suspend.



FIGURE 9. Advanced settings for the serial port properties in Windows 10.



WARRANTY CONDITIONS

All AXAGON products have a warranty period of 24 months from the date of receipt of the product by the buyer.

Warranty claims can only be applied to the AXAGON dealer who has supplied the buyer with the device.

The goods must be supplied complete with the claim including, in particular, power adapters, cables, reductions, media with controls and other accessories, preferably in the original packaging.

TECHNICAL SUPPORT

If you have any technical problems with your device, you need more information or technical advice, drivers are missing, etc., visit the AXAGON website at www.axagon.eu first.

If you do not find a satisfactory answer here, you can contact our technical support. For technical questions, use the address: support@axagon.cz.

AXAGON®

© 2017 AXAGON Czech Republic. All rights reserved.
All brands and product names are registered trademarks of their respective owners.
Specifications are subject to change without prior notice.

201810REV2.0

