

AXAGON

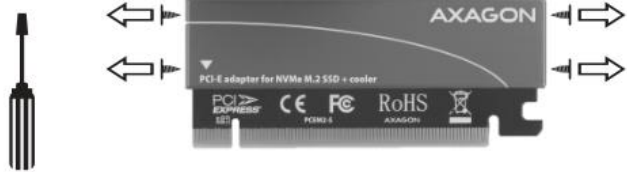

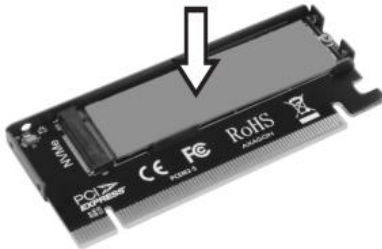
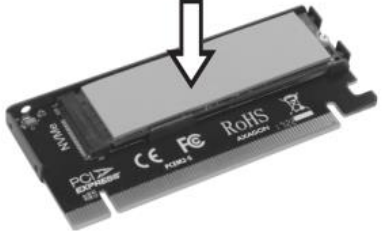


USER MANUAL

COMPACT **INTERNAL**
PCI-E ADAPTER
for NVMe **M.2 SSD**
+ **cooler**

PCEM2-S



The **AXAGON PCEM2-S** internal adapter allows you to connect a M.2 SSD disk to a desktop computer using a PCI-Express bus. High-quality manufacturing, compact dimensions, attractive design and sophisticated cooling make the adapter an ideal choice for upgrading a desktop computer that does not have an M.2 slot. The adapter supports M-key NVMe (PCI-Express) M.2 SSD drives, single-sided and double-sided. The reduction has no capacity limitation for SSDs and M.2 cards can be used up to 22x80mm size. Thanks to PCI-Express 3.0 4-lane) interface, speed up to 8GBps can be achieved. NVMe SSD drives have the transfer rates several times higher than standard SATA drives. The M.2 SSD disk cooling is provided by an aluminum cover that works as a heat sink and by the attached heat conductive pads. The result is an ideal combination of M.2 SSD cooling and heat dissipation. The LED indicates the connection or data transfer in the M.2 slot.

<p>1. UNSCREW THE HEATSINK</p> 	<p>4. FASTEN THE SCREW</p> 
<p>2. INSERT BOTTOM COOLING PAD</p> <p>!!! BLUE COOLING PAD: for SSD with chips on one side only !!!</p> <p>!!! PINK COOLING PAD: for SSD with chips on both sides !!!</p> 	<p>5. INSERT UPPER BLUE COOLING PAD</p> 
<p>3. INSERT THE M.2 SSD DISC</p> 	<p>6. COMPLETE THE PCI-E ADAPTER</p> 

INSERTING A DISK INTO THE ADAPTER

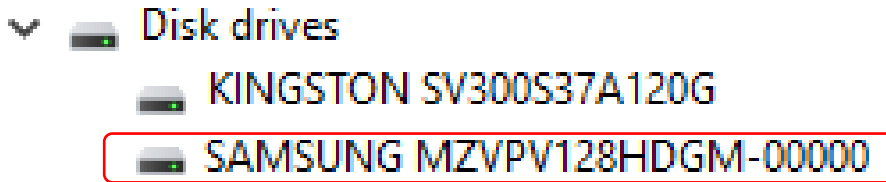
1. Remove the adapter cooler.
2. Insert the cooling pad. For **single-sided** M.2 SSD drives use a **blue**, for **two-sided** M.2 SSDs use a **pink** cooling pad.
3. Insert the M.2 SSD disk and lower it to the adapter body.
4. Screw the M.2 SSD disk.
5. Insert the blue top cooling pad.
6. Mount the adapter cooler.



CONNECTING THE ADAPTER INTO THE COMPUTER

1. Shut down the computer and unplug the power cord.
2. Open the cabinet and mount the adapter into the free PCI-Express position.
3. Close the cabinet, connect the power and turn on the computer.
5. Automatic installation takes place - no drivers required.
6. Check the successful installation in "Device Manager" (**Fig. 1**).

FIGURE 1. Checking successful installation with "Device Manager".



BOOTING FROM DISK AND INSTALLING THE OPERATING SYSTEM

Booting:

You need to set the correct boot order in the motherboards BIOS / UEFI (examples of settings):

- In the Boot / Hard Disk Drives (AMI), Advanced / Hard Disk Boot Priority (Award) or BIOS / Boot Option Priorities (UEFI) menu, set the boot order.
- Disk from which you want to boot or install the operating system set on the first place.

OS installation:

Installation media / images usually contain the necessary drivers. If the M.2 SSD disk is not visible when you install Windows, you must manually load the M.2 driver:

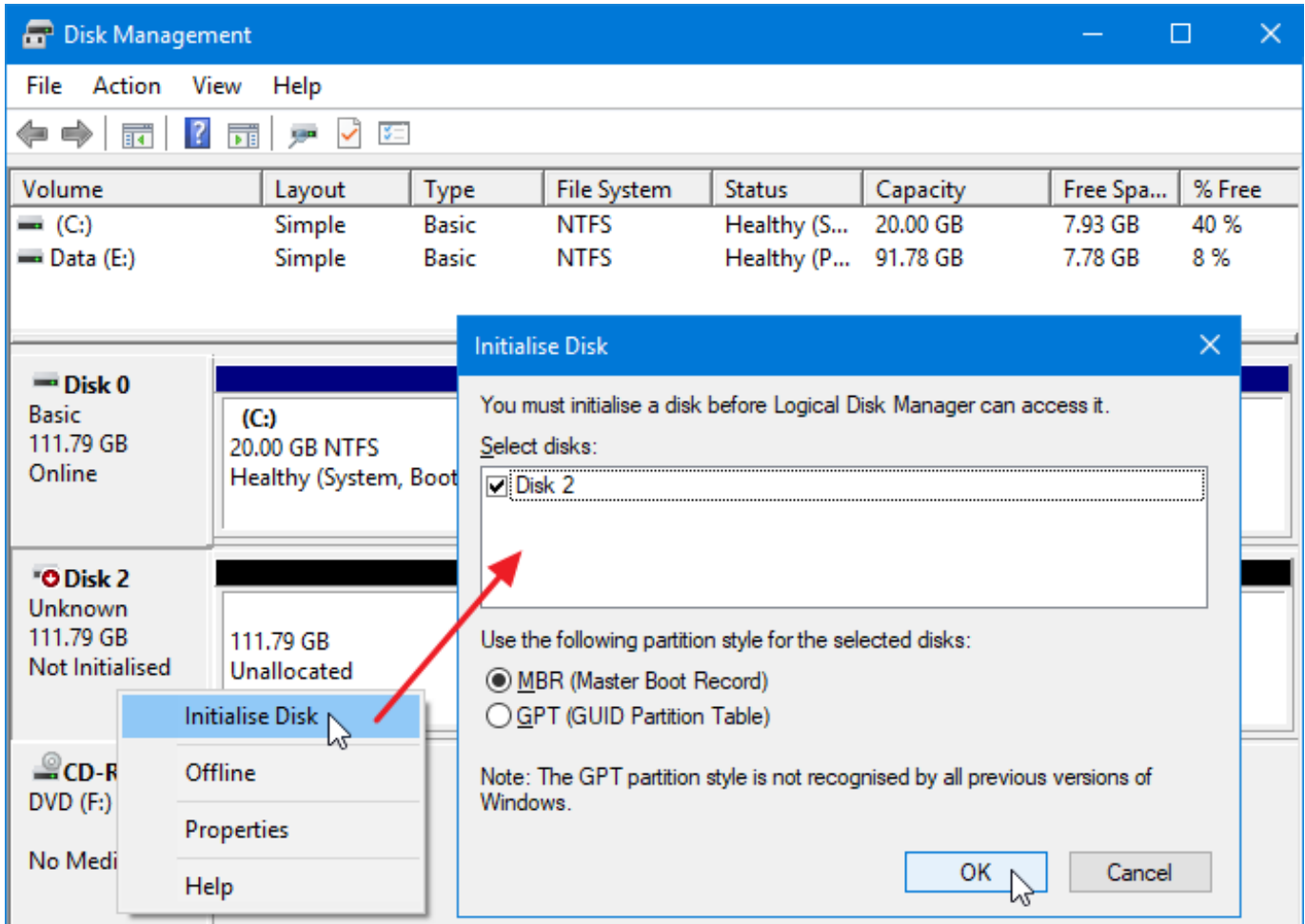
- Download the driver from the M.2 disk manufacturer's pages and save it for example on a flash drive.
- Use the "Load driver" button during installation of Windows 10/8/7 (installation type "Custom" - step "Where do you want to install Windows?"). Use the "Browse" button to select the drive (flash disk) and directory for the M.2 driver. Select the correct driver (32-bit or 64-bit), confirm with "OK" buttons and continue with "Next" button.
- Select the desired M.2 disk to which you want install Windows system and continue with installation as usual.



DISK INITIALIZATION

1. Launch the "Disk Management" utility (Control Panel - System and Security - Administrative Tools).
2. Select the disk, right-click and select "Initialize disk" (**Fig. 2**).
3. Complete the task by "OK" button.

FIGURE 2. Disk initialization.

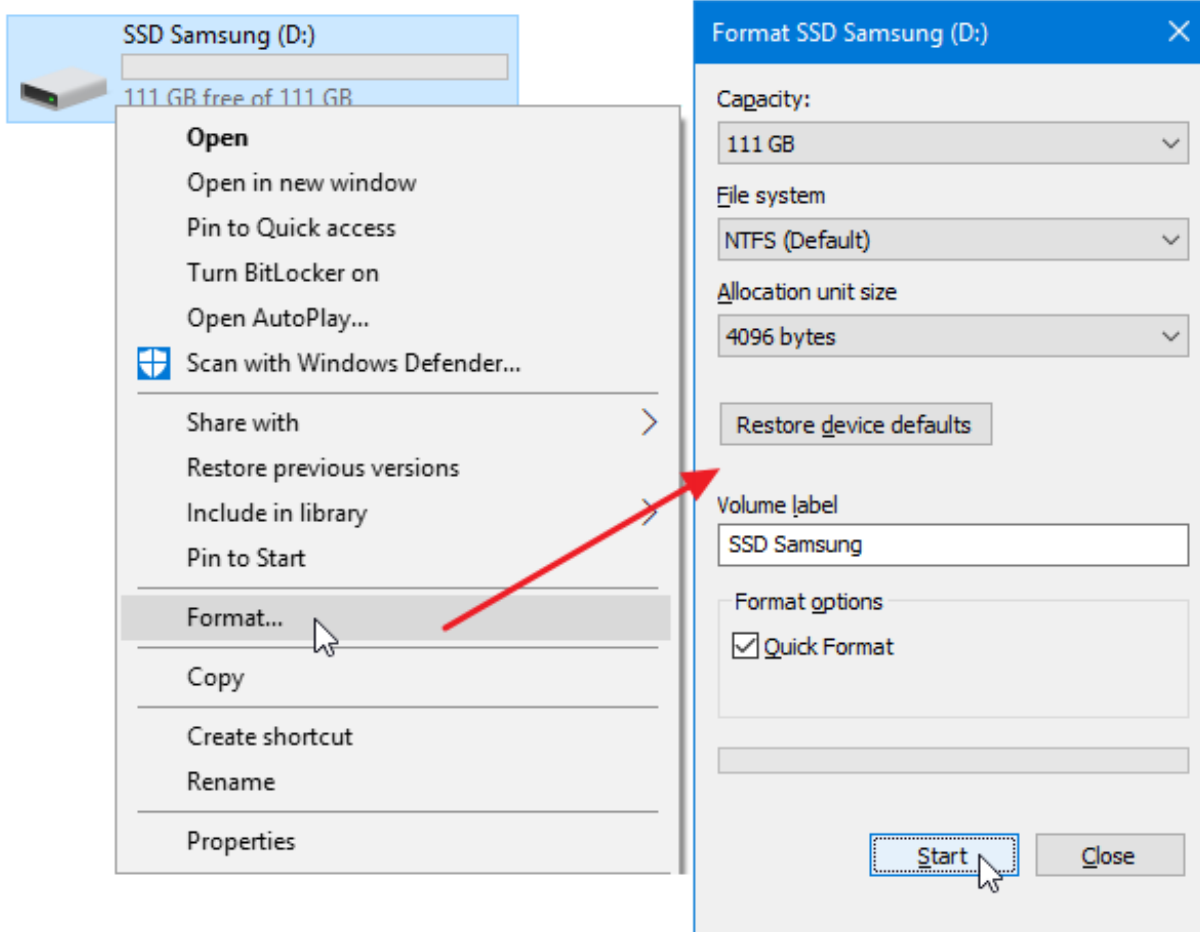


DISK FORMAT

Caution: Formatting will cause data to be lost on the disk!

1. Open "Explorer" and select "My Computer".
2. Select the disk, right-click and select "Format ..." (**Fig. 3**).
3. Select the desired parameters, such as File System, Volume Label, Fast Formatting.
4. Click "Start" button to start formatting.

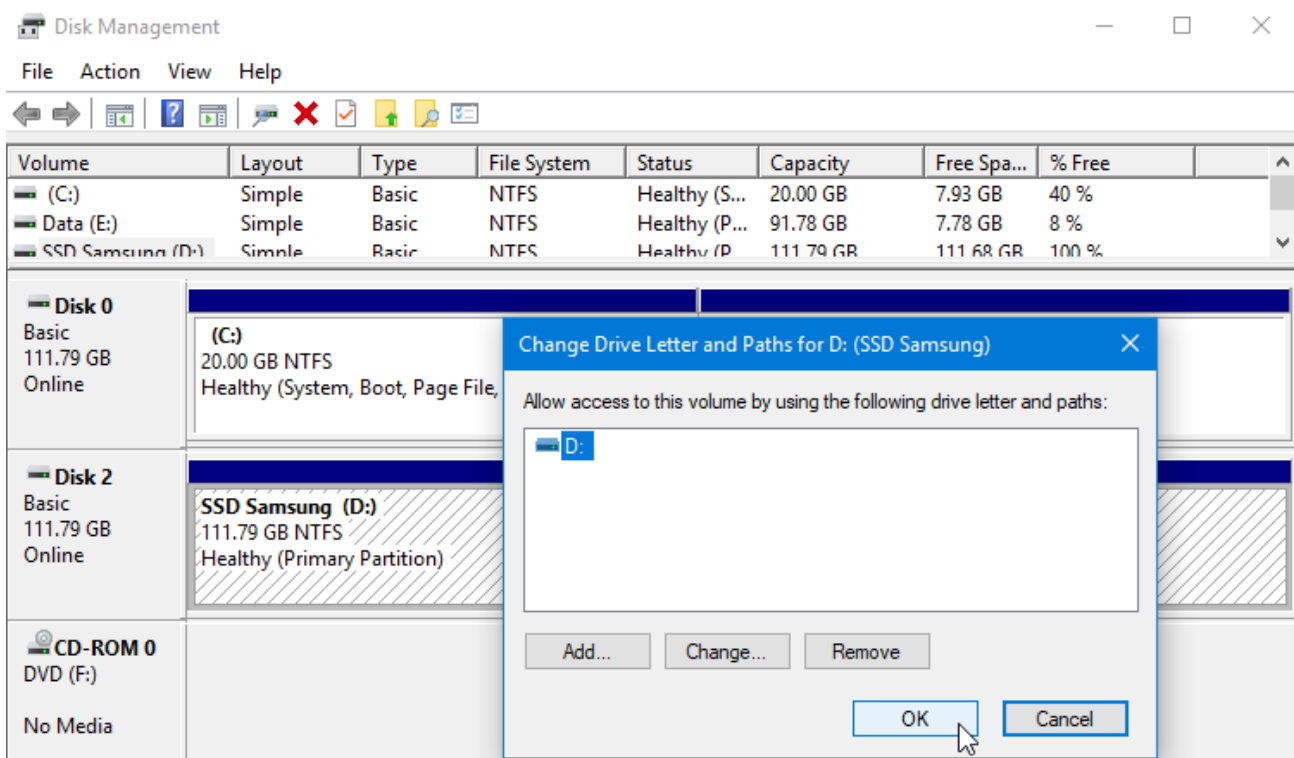
FIGURE 3. Disk formatting.



ALLOCATION OR CHANGE THE DRIVE LETTER

1. Launch the "Disk Management" utility (Control Panel - System and Security - Administrative Tools).
2. Select the drive, right-click and select "Change drive letter and path".
3. Click the "Add" button or select the drive letter and click "Change", select the drive letter you want and click the "OK" button (**Fig. 4**). The change is done immediately, so you do not have to restart the PC.
4. If the drive letter cannot be assigned to the drive, it is possible that the drive is formatted as "dynamic". If you want to keep disk data, connect it to the original device and make a backup of the disk. Then convert it to a normal disk, initialize it, and then perform Low Level Format (e.g. using the [HDD Low Level Format Tool](#)).

FIGURE 4. Allocation or change the drive letter.



FAQ

1. After inserting the newly purchased SSD into the adapter and connecting to the computer, the drive is not displayed in "Device Manager" or "My Computer".

a) The newly purchased disk may need to be initialized before first use.

b) If the new drive is not initialized automatically, open "Disk Management", right-click the drive you want and initialize it.

c) It is possible that the Windows operating system did not assign a drive letter to the new storage device. If the drive letter is not assigned, open "Disk Management", right-click on the drive you want and manually assign the drive letter. See "**Assigning or changing drive letter**" chapter.

2. Is it possible to boot from the disk in the adapter, i.e. install the operating system on it?

Yes, it is possible. The adapter does not contain electronics, no drivers are needed. It's only important to set the boot order in BIOS / UEFI correctly.

3. Where can I download the drivers to the adapter?

Drivers are already part of the operating system, installed completely automatically. The adapter is detected as a standard memory device, no additional drivers are needed.



WARRANTY CONDITIONS

All AXAGON products have a warranty period of 24 months from the date of receipt of the product by the buyer. Warranty claims can only be applied to the AXAGON dealer who has supplied the buyer with the device. The goods must be supplied complete with the claim including, in particular, power adapters, cables, reductions, media with controls and other accessories, preferably in the original packaging.

TECHNICAL SUPPORT

If you have any technical problems with your device, you need more information or technical advice, drivers are missing, etc., visit the AXAGON website at www.axagon.eu first.

If you do not find a satisfactory answer here, you can contact our technical support. For technical questions, use the address: support@axagon.cz.

AXAGON[®]

© 2018 AXAGON Czech Republic. All rights reserved.
All brands and product names are registered trademarks of their respective owners.
Specifications are subject to change without prior notice.



201811REV1.0

